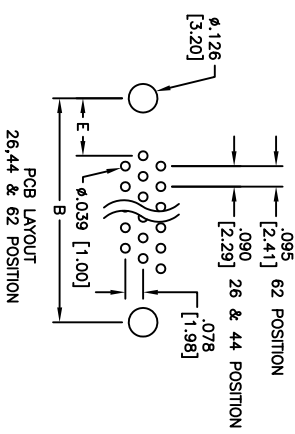
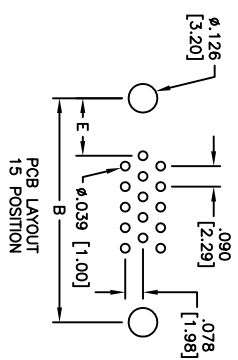
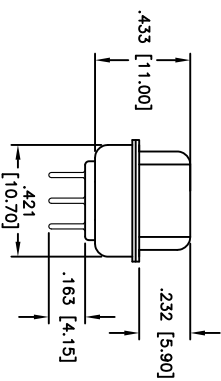
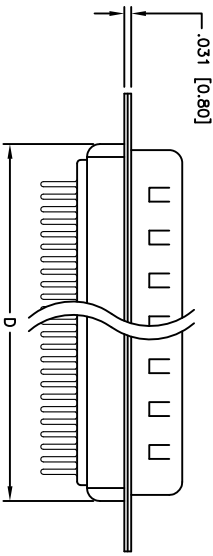
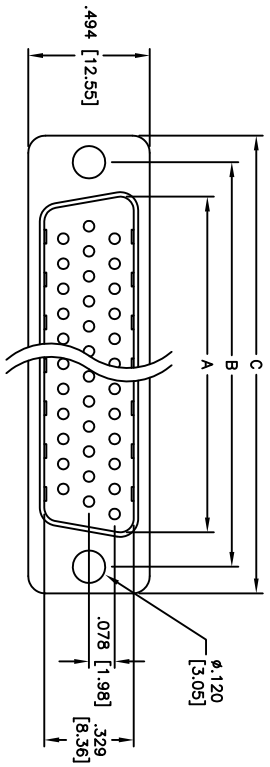


Rev	AWO #	Description	Date	Appr
-		RELEASED	5/5/05	

APPROVED: _____
 DATE: _____ TITLE: _____



Positions	DIMENSIONS				
	A	B	C	D	E
15	.666 [16.92]	.984 [24.99]	1.213 [30.81]	.759 [19.28]	.277 [7.04]
26	.994 [25.25]	1.312 [33.32]	1.541 [39.14]	1.083 [27.51]	.271 [6.88]
44	1.534 [38.96]	1.852 [47.04]	2.088 [53.04]	1.626 [41.30]	.271 [6.88]
62	2.182 [55.43]	2.500 [63.50]	2.729 [69.32]	2.271 [57.70]	.275 [7.00]

Unit: Inch / mm

SPECIFICATIONS:
 Material: Insulator color: Black
 Insulator color: Phosphor Bronze
 Shell: Steel, Tin plated
 Hardware: Brass, Nickel plated
 Plating: Gold flash over Nickel underplate overall
 Electrical: Operating voltage: 250 VAC max
 Current rating: 5 Amps max
 Contact resistance: 20 mohms max
 Insulation resistance: 5,000 Mohms min
 Dielectric withstanding voltage: 1,000 VAC for 1 minute
 Temperature Rating: Operating temperature: -65°C to +125°C
 Environmental: Lead free, RoHS Compliant

UNLESS OTHERWISE SPECIFIED
 ALL DIMENSIONS ARE INCHES [MM]
 TOLERANCES: EXCEPT AS NOTED
 INCHES Holes ±.10
 .XX ±.020
 .XXX ±.015
 .XXX ±.015
 APPROVALS DATE

ADAM TECH
 909 Railway Avenue, Union, NJ 07083
 Phone: 908-687-5000 Fax: 908-687-5710
 HIGH DENSITY D-SUB PLUG, PCB TAILS
 W/ .120 DIA HOLE

SIZE	PART NO.	REV.
X	HDTXX-PT	
CHECKED		
APPROVED		
DRAWN	SS	5/5/05
REF: SCALE: NTS SHEET 1 OF 1		